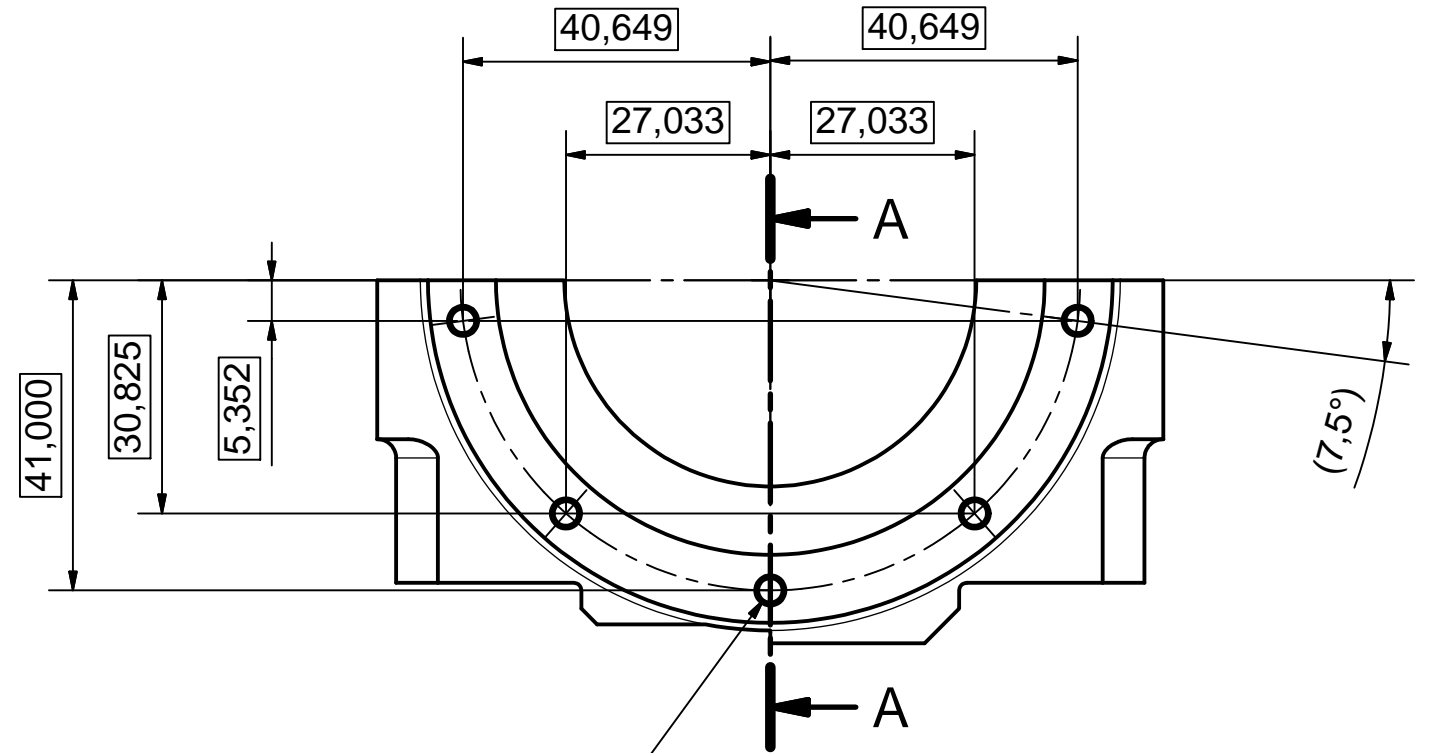
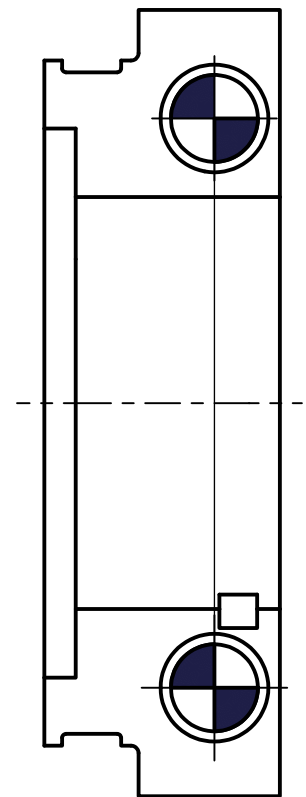
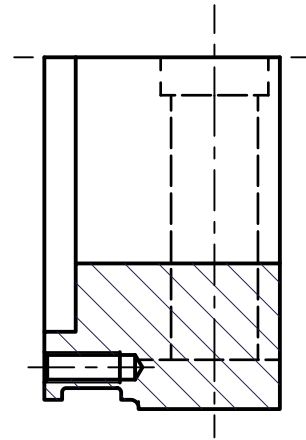


A-A (1:1)



5 EQUI' SPACED HOLES
DRILL & TAP M4x0.7 - 6H
∠ Ø4,00 X 90,00°
⊕ 0,10

CALVER ST 14, RICCAL DRIVE YORK ROAD INDST. EST. MALTON N. YORKSHIRE YO17 6YE		THIS DRAWING AND ANY INFORMATION OR DESCRIPTIVE MATTER SET OUT HEREON ARE THE CONFIDENTIAL AND COPYRIGHT PROPERTY OF CALVER ST LTD. AND MUST NOT BE DISCLOSED, LOANED, COPIED OR USED FOR MANUFACTURING, TENDERING OR ANY OTHER PURPOSE WITHOUT WRITTEN PERMISSION.	
REMOVE ALL SHARP EDGES UNLESS OTHERWISE STATED			
GENERAL TOLERANCES MACHINED DIMS: ± 0.1mm ANGULAR DIMS: ± 0.1° FABRICATED DIMS: ± 3.0mm			
6.3 ✓ ROUGH MACHINE 3.2 ✓ FINISH MACHINE 0.8 ✓ GRIND OR EQUIVALENT		ALL DIMENSIONS IN MILLIMETERS (mm)	
DESCRIPTION/TITLE: REAR MAIN BEARING CAP - MODS.			
MATERIAL: CAST STEEL		HEAT TREATMENT: N/A	
SCREW THREAD FORMS TO BS3643		MARK DWG. NO. AT ⊕	
SCALE	DESIGNED	DRAWN	DATE
1:1	D.Wood	D.Wood	22/05/13
DRAWN IN ACCORD WITH BS308		CHECKED	DATE
		SHEET 1 OF 1 DRAWING NUMBER: CST/DWA/110223-003C	